

DS-PD2-D10P-W/W1

Wireless 10m Pet Immune Dual Technology Detector

HIKVISION

EN50131-2-4:2008
EN50131-1:2006+A1:2009
Security Grade (SG) 2
Environmental Class (EC) II

ENGLISH

References

1 WIRELESS DEVICE CONTROL

Please note: Once registered, the detector will begin a 10 minute timer allowing walk test of the PIR and microwave. During this time, the detector will not transmit to the panel and is used to adjust the PIR and microwave settings.

2 REGISTER LOCALLY

Please register the detector within 90 seconds after it being powered on.
Register Locally

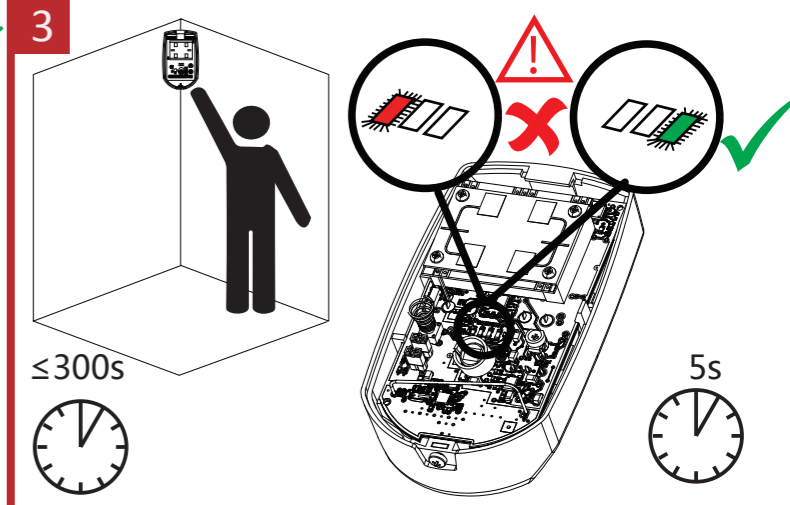
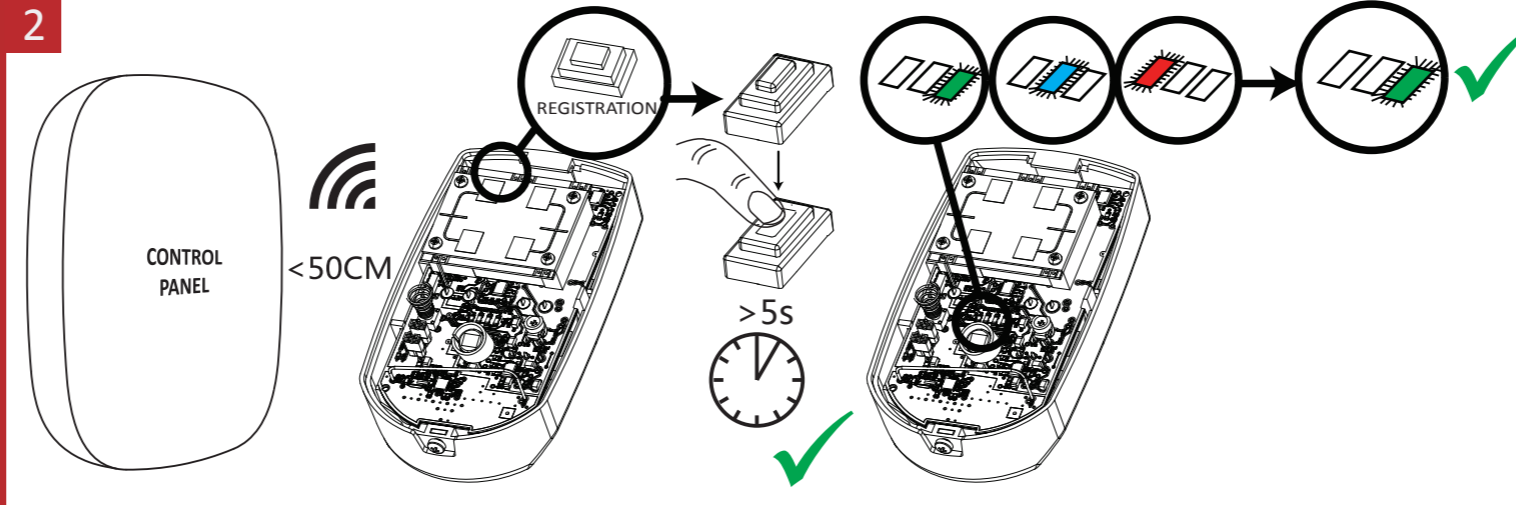
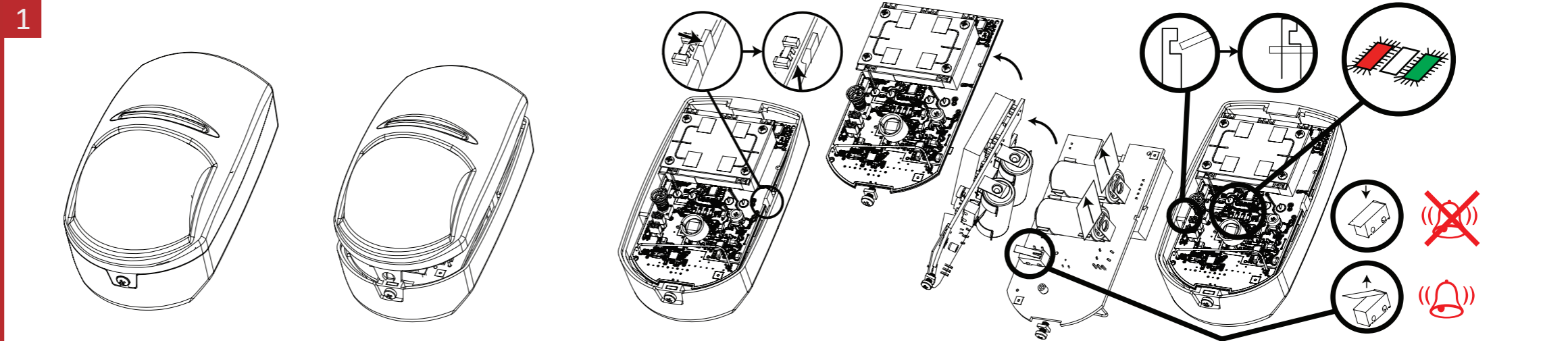
1. Make the security control panel enter the registration mode.
2. Register the detector: Hold the registration key until the three LEDs flash alternately. The green LED will flash 8 times if the registration is finished.
3. Communication Test: Release the TAMPER spring to trigger the alarm.

Note: The distance between the security control panel and the detector should be less than 50 cm.

Initialize the Detector

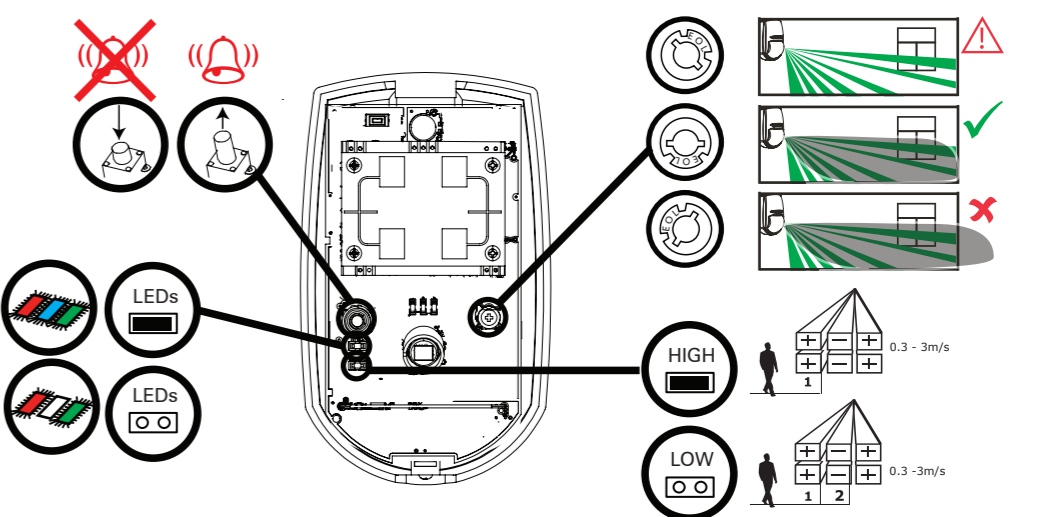
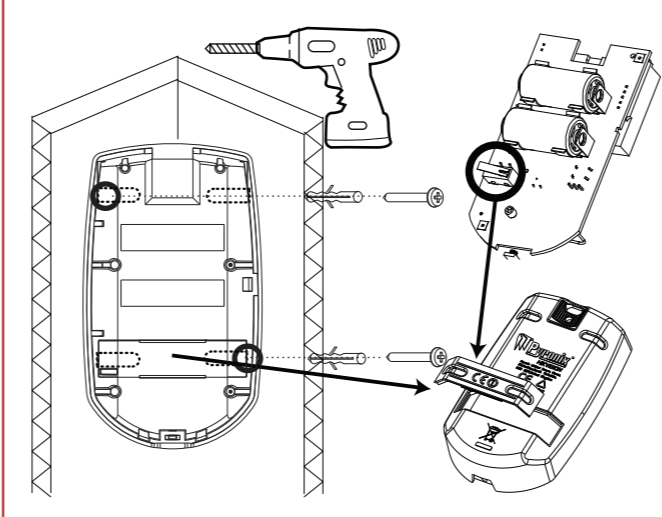
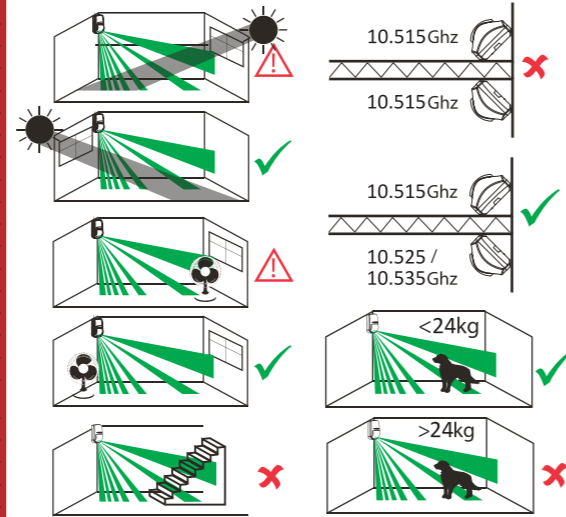
1. Remove the battery to power the detector off.
2. 5s later, hold the registration key and reinstall the battery to power the detector on at the same time to make the three LEDs start flashing alternately. Release the registration key while the three LEDs flash once together.

3 DIAGNOSTICS



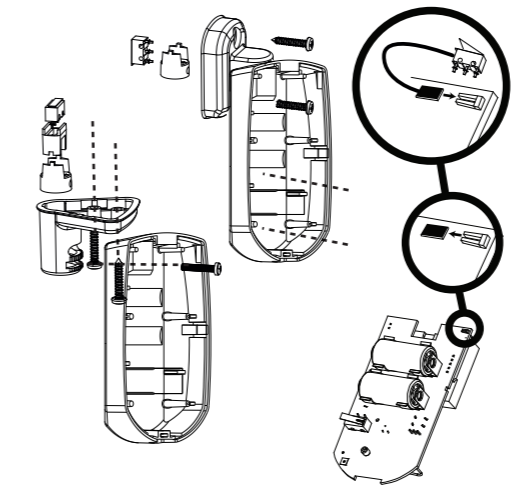
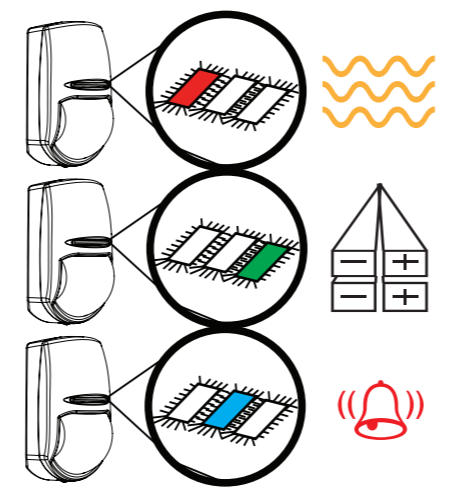
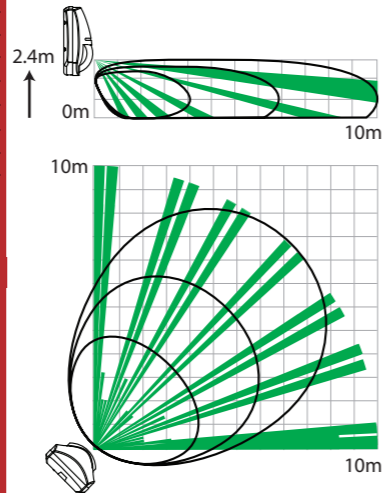
Specification

Lens Characteristics	
Detection Range	10m
Detection Angle	85°
Detection Zones	56 zones, 6 planes
Detection Speed	0.3 - 3m/s
Mounting Height	1.8-2.4m
Key Features	
Animal Immune	Up to 24kg
Blue Wave Technology	Yes
Automatic Sensitivity	Yes
Digital Temperature Compensation	Yes
Separate Indication: Microwave, PIR and Alarm	Orange (Microwave), Blue (Alarm), Green (PIR)
3 Microwave Frequencies to Avoid Interference	Yes
Tamper Protection	Front, rear, and bracket tamper signal input
Signal Strength Indicators (SSI)	Yes
Electrical & Battery	
Microwave Frequency	10.515, 10.525, 10.535 GHz
Transmission Frequency	9.89, 9.90, 9.91 GHz
Range in Open Space	800m
3V Lithium Battery Included	2x CR123A
Minimum Battery Life (years)	2
Environment Features	
Operating Temperature	-10°C to +40°C (Certified)
Weight	135g
Dimensions (H x W x D)	117 x 69 x 62mm
Optics	Sealed
Geometric Lens Configuration	3D
Accessories	
Ceiling mounted bracket included	Yes
Wall mounted bracket included	Yes



Battery Information

- The batteries supplied have been chosen to provide long service life whilst, for safety reasons, having limited output current.
- The battery is protected on purchase by a piece of plastic that must be removed for operation. When disposing of the product, the battery must be removed and disposed of separately in accordance with the local regulations.



CE This product and - if applicable - the supplied accessories too are marked with "CE" and comply therefore with the applicable harmonized European standards listed under the RE Directive 2014/53/EU, the RoHS Directive 2011/65/EU.

For electrical products sold within the European Community. At the end of the electrical products life, it should not be disposed of with household waste. Please recycle where facilities exist. Check with your local Authority or retailer for recycling advice in your country.

This product operates in a European non-harmonised frequency band

