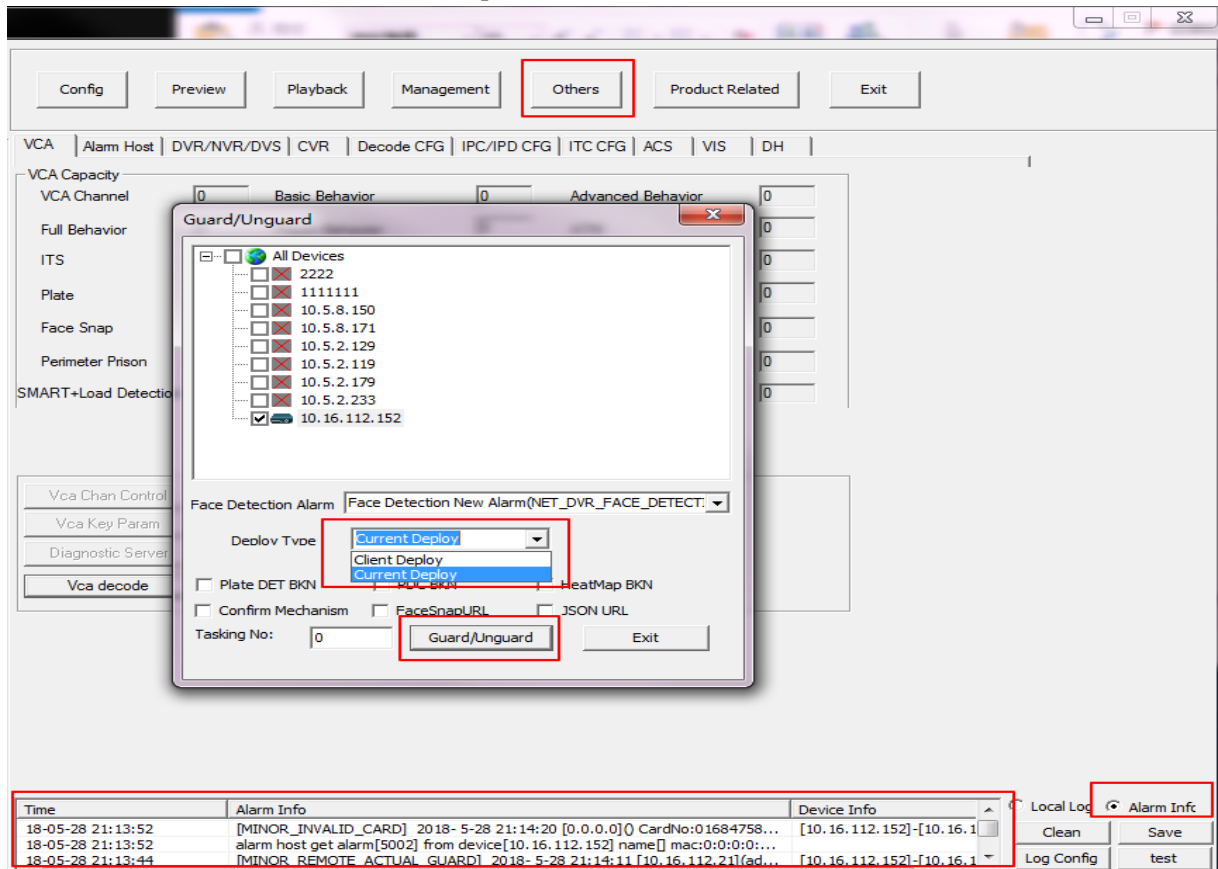


ACS_DS-K280X_GML_GM_V2.0.1_build180209

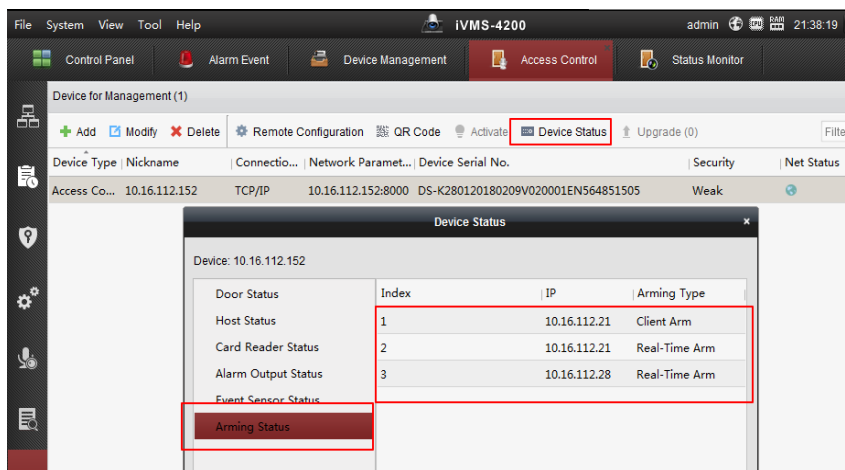
Release Notes

New Features

1. Support 1 channel client arm and 4 channel real time arm.
 - (1) Software such as ivms-4200 only support client arm, when armed, all the off-line event and real time events of device will upload to software.
 - (2) SDK demo support both client arm and real time arm. Real time arm will only get real time event, the off-line event won't upload.



2. Support device arming status check(arming IP and arming mode):



3. Support first card remain open and first card authentication.
4. Support in-controller anti-passback
5. Support 500 authentication password.
4-8 digital, cannot be same as super password, duress code and dismiss code.
6. Support Custom Wiegand
7. Support remote event collection on 4200.
8. Event Card Linkage support more linkage selection(Stop device buzzing, stop card reader buzzing, stop alarm output).
9. Support domain name NTP server

Customer Impact and Recommended Action

This new firmware upgrade is to improve product performance, and will take effect automatically after upgrading from previous versions. We'd like to inform you the above changes. Also, we are sorry for any possible inconvenience of use-habit changes caused by this action.

For questions or concerns, please contact our local technical support team.

Note:

- Hikvision has all rights to alter, modify and cancel this notice.
- Hikvision doesn't give any guarantee for old models' stock.
- Hikvision is not liable for any typing or printing errors.
- For special model's change details, please contact our local technical support team.

Hikvision Digital Technology CO., Ltd.
No. 555 Qianmo Road, Binjiang District, Hangzhou 310052,
China
Tel: +86-571-8807-5998
FAX: +86-571-8993-5635
Email: support@hikvision.com