

DS-6900UD Series Decoder



Features and Functions

Professional and Reliable

- DS-6901UDI Provides HDMI, VGA, and BNC output interfaces
- DS-6904UDI, DS-6908UDI, DS-6910UDI, DS-6912UDI, DS-6916UDI provide HDMI (adaptable to DVI-D) and BNC output interfaces
- Up to 4K (3840 × 2160@30Hz) via HDMI output interfaces (only for even interface)
- H.265, H.264 and MPEG4 video compression
- PS, RTP, TS, ES encapsulation formats
- Three encoding levels: baseline, main, and high-profile
- G.722, G711A, G726, G711U, MPEG2-L2, and AAC audio compression
- DS-6901UDI supports 2-ch@12MP, 4-ch@8MP, 6-ch@5MP, 10-ch@3MP, 16-ch@1080p simultaneous decoding
- DS-6904UDI supports 4-ch@12MP, 8-ch@8MP, 12-ch@5MP, 20-ch@3MP, 32-ch@1080p simultaneous decoding
- DS-6908UDI supports 8-ch@12MP, 16-ch@8MP, 24-ch@5MP, 40-ch@3MP, 64-ch@1080p simultaneous decoding
- DS-6910UDI supports 10-ch@12MP, 20-ch@8MP, 30-ch@5MP, 50-ch@3MP, 80-ch@1080p simultaneous decoding
- DS-6912UDI supports 12-ch@12MP, 24-ch@8MP, 36-ch@5MP, 60-ch@3MP, 96-ch@1080p simultaneous decoding
- DS-6916UDI supports 16-ch@12MP, 32-ch@8MP, 48-ch@5MP, 80-ch@3MP, 128-ch@1080p simultaneous decoding
- Two decoding modes: active decoding and passive decoding
- Remote video files' decoding output
- Supports window opening and window roaming
- Supports HiDDNS
- Gets stream and decodes via URL and RTSP from encoding devices
- Displays the decoded video stream on the video wall by directly linking cameras or by stream media forwarding



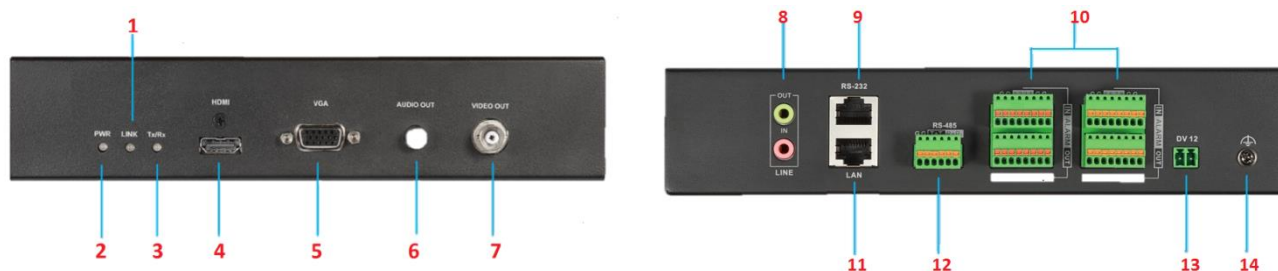
Specifications

Model	DS-6901UDI	DS-6904UDI	DS-6908UDI	
Video/Audio Output	HDMI Output	1-ch 1080p: 1920 × 1080@50/60Hz UXGA: 1600 × 1200@60Hz (only for even interface) SXGA: 1280 × 1024@60Hz 720p: 1280 × 720@50Hz/60Hz XGA: 1024 × 768@60Hz 4K: 3840 × 2160@30Hz (only for even interface)	4-ch	8-ch
	VGA Output	1-ch 1080p: 1920 × 1080@50/60Hz SXGA: 1280 × 1024@60Hz 720p: 1280 × 720@50Hz/60Hz XGA: 1024 × 768@60Hz	/	/
	BNC Output	1-ch	2-ch, 1 DB 15	4-ch, 1 DB 15
	Decoding Resolution	Up to 12MP		
Audio/Video Decoding	Decoding Channel	16-ch	32-ch	64-ch
	Decoding Capability	12MP@20fps: 2-ch 8MP@30fps: 4-ch 5MP@30fps: 6-ch 3MP@30fps: 10-ch 1080p@30fps: 16-ch	12MP@20fps:4-ch 8MP@30fps: 8-ch 5MP@30fps: 12-ch 3MP@30fps: 20-ch 1080p@30fps: 32-ch	12MP@20fps:8-ch 8MP@30fps: 16-ch 5MP@30fps: 24-ch 3MP@30fps: 40-ch 1080p@30fps: 64-ch
	Split Screen	1/4/6/8/9/12/16	1/4/6/8/9/12/16/25	1/4/6/8/9/12/16/25/36
	Network Interface	1; 10/100/1000 Mbps self-adaptive Ethernet interface	2; 10/100/1000 Mbps self-adaptive management network interface 2; 10/100/1000 Mbps self-adaptive Ethernet interface 16; 10M/100M self-adaptive Ethernet interface	
External Interface	Serial Interface	1 RS-232 (RJ 45), 1 RS-485		
	Two-Way Audio In	1-ch, 3.5 mm connector (2.0 Vp-p, 1 k Ω)		
	Two-Way Audio Out	1-ch, 3.5 mm connector (2.0 Vp-p, 1 k Ω)		
	Audio Output	1-ch	4-ch, 1 DB 15	8-ch, 1 DB 15
	Alarm In	8-ch		
	Alarm Out	8-ch		
General	Power Supply	12 VDC	220 VAC	
	Power Consumption	≤ 15 W	≤ 70 W	
	Working Temperature	-10° C to 55° C (14° F to 131° F)		
	Working Humidity	10% to 90%		
	Dimensions (W × D × H)	220 × 148 × 45 mm (8.66" × 5.83" × 1.77")	440 × 311 × 44.5 mm (17.32" × 12.24" × 1.75")	
	Weight	≤ 1.2 kg (2.65 lb)	≤ 5.2 kg (11.4 lb)	

Model	DS-6910UDI	DS-6912UDI	DS-6916UDI	
Video/Audio Output	HDMI Output	10-ch 1080p: 1920 × 1080@50/60Hz UXGA: 1600 × 1200@60Hz (only for even interface) SXGA: 1280 × 1024@60Hz 720p: 1280 × 720@50Hz/60Hz XGA: 1024 × 768@60Hz 4K: 3840 × 2160@30Hz (only for even interface)	12-ch	16-ch
	BNC Output	5-ch, 2 DB 15	6-ch, 2 DB 15	8-ch, 2 DB 15
	Decoding Resolution	Up to 12MP		
	Decoding Channel	80-ch	96-ch	128-ch
Audio/Video Decoding	Decoding Capability	12MP@20fps: 10-ch 8MP@30fps: 20-ch 5MP@30fps: 30-ch 3MP@30fps: 50-ch 1080p@30fps: 80-ch	12MP@20fps: 12-ch 8MP@30fps: 24-ch 5MP@30fps: 36-ch 3MP@30fps: 60-ch 1080p@30fps: 96-ch	12MP@20fps:16-ch 8MP@30fps: 32-ch 5MP@30fps: 48-ch 3MP@30fps: 80-ch 1080p@30fps: 128-ch
	Split Screen	1/4/6/8/9/12/16/25/36		
	Network Interface	2; 10/100/1000 Mbps self-adaptive management network interface 2; 10/100/1000 Mbps self-adaptive Ethernet interface 16; 10M/100M self-adaptive Ethernet interface		
External Interface	Serial Interface	1 RS-232 (RJ 45), 1 RS-485		
	Two-Way Audio In	1-ch, 3.5 mm connector (2.0 Vp-p, 1 k Ω)		
	Two-Way Audio Out	1-ch, 3.5 mm connector (2.0 Vp-p, 1 k Ω)		
	Audio Output	10-ch, 2 DB 15	12-ch, 2DB 15	16-ch, 2 DB 15
	Alarm In	8-ch		
	Alarm Out	8-ch		
General	Power Supply	220 VAC		
	Power Consumption	≤ 108 W		
	Working Temperature	-10° C to 55° C (14° F to 131° F)		
	Working Humidity	10% to 90%		
	Dimensions (W × D × H)	440 × 311 × 80 mm (17.32" × 12.24" × 3.15")		
	Weight	≤ 6.4 kg (14.11 lb)		

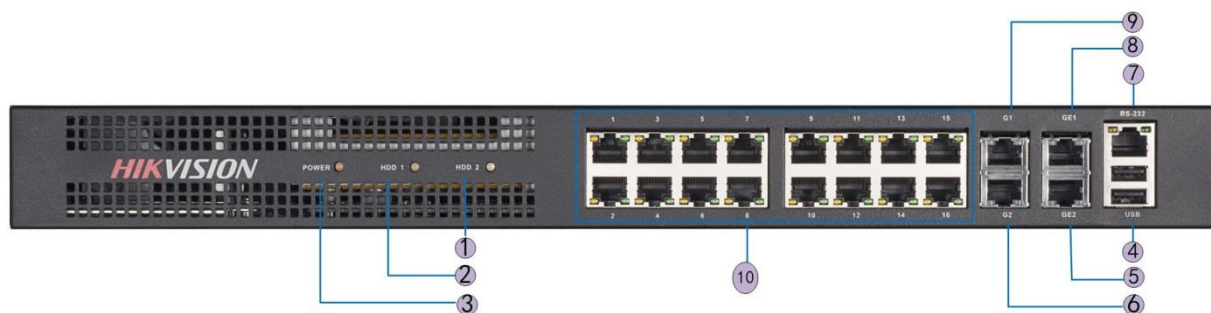
Physical Interfaces

DS-6901UDI Front Panel and Rear Panel



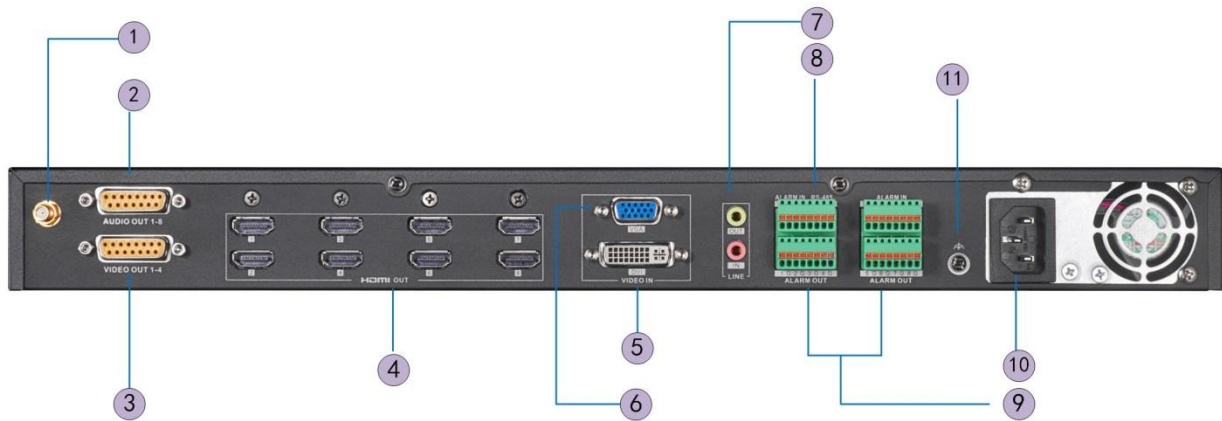
Index	Description	Index	Description
1	Network connection LED indicator	8	Line input/output
2	Power LED indicator	9	RS-232 interface
3	Data transmitting/receiving status LED indicator	10	Alarm input/output
4	HDMI video output	11	LAN 10/100/1000 Mbps Ethernet interface
5	VGA video output	12	RS-485 interface
6	Audio out	13	Power supply (DV 12)
7	BNC video output	14	GND (Ground)

DS-6904UDI/6908UDI Front Panel



Index	Description	Index	Description
1	Power indicator	6	LAN 10/100/1000 Mbps Ethernet interface 2
2	HDD 1 indicator (reserved)	7	RS-232 interface
3	HDD 2 indicator (reserved)	8	Local management network interface 1
4	USB 2.0	9	LAN 10/100/1000 Mbps Ethernet interface 1
5	Local management network interface 2	10	LAN 10/100 Mbps Ethernet interface

DS-6908UDI Rear Panel

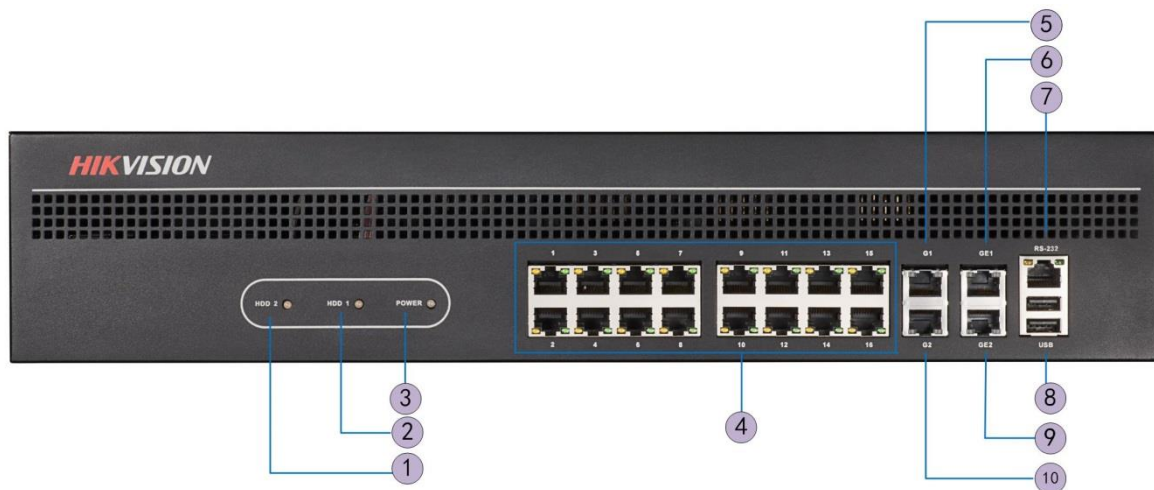


Index	Description	Index	Description
1	WiFi (reserved)	7	Line input/output
2	Audio out	8	RS-485 interface
3	Video out	9	Alarm input/output
4	HDMI video out	10	Power
5	DVI video input	11	GND
6	VGA video input		



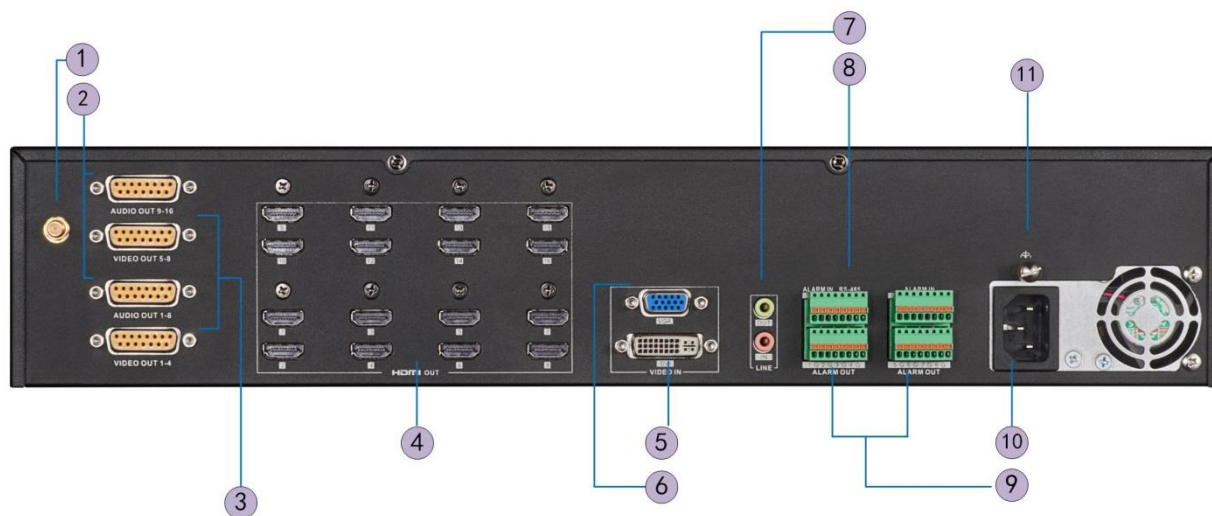
DS-6904UD provides 4-ch HDMI output interfaces and other interfaces are the same with DS-6908UD.

DS-6910UDI/6912UDI/6912UDI Front Panel



Index	Description	Index	Description
1	HHD 1 indicator (reserved)	6	Local management network interface 1
2	HHD 2 indicator (reserved)	7	RS-232 interface
3	Power indicator	8	USB 2.0
4	LAN 10/100Mbps Ethernet interface	9	Local management network interface 2
5	LAN 10/100/1000 Mbps Ethernet interface 1	10	LAN 10/100/1000 Mbps Ethernet interface 2

DS-6916UDI Rear Panel



Index	Description	Index	Description
1	WiFi (reserved)	7	Line input/output
2	Audio out	8	RS-485 interface
3	Video out	9	Alarm input/output
4	HDMI video output	10	Power
5	DVI video input	11	GND
6	VGA video output		



DS-6910UDI provides 10 HDMI output interfaces, DS-6912UDI provides 12 HDMI output interfaces and other interfaces are the same with DS-6916UDI.

Available Models

DS-6901UDI, DS-6904UDI, DS-6908UDI, DS-6910UDI, DS-6912UDI, DS-6916UDI

Distributed by



Headquarters

No.555 Qianmo Road, Binjiang District,
Hangzhou 310051, China
T +86-571-8807-5998
overseasbusiness@hikvision.com

Hikvision Poland
T +48-22-460-01-50
poland@hikvision.com

Hikvision USA
T +1-909-895-0400
sales.usa@hikvision.com

Hikvision India
T +91-22-28469900
sales@pramahikvision.com

Hikvision UK
T +44-1628-9021-4
support.uk@hikvision.com

Hikvision Europe
T +31-23-5542770
saleseuro@hikvision.com

Hikvision Italy
T +39-0438-6902
info.it@hikvision.com

Hikvision Singapore
T +65-6684-4718
sg@hikvision.com

Hikvision Middle East
T +971-4-8816086
salesme@hikvision.com

Hikvision France
T +33(0)1-85-330-444
info.fr@hikvision.com

Hikvision Oceania
T +61-2-8599-4233
salesau@hikvision.com

Hikvision Russia
T +7-495-669-67-99
saleru@hikvision.com

Hikvision Spain
T +34-91-737-16-55
info.es@hikvision.com

Hikvision Hong Kong
T +852-2151-1761