

User Manual

一.Overview

This software (auto downloading server) is used to download the recordings of the specific channels in specific time periods from the remote mobile DVR; and it supports continue transferring from breakpoint; the default port of the ABUDownload is 5990;

User only needs to specify very few information, like, the path for the downloading files, and the time periods users wish to download.

二.Operation

Main Interface

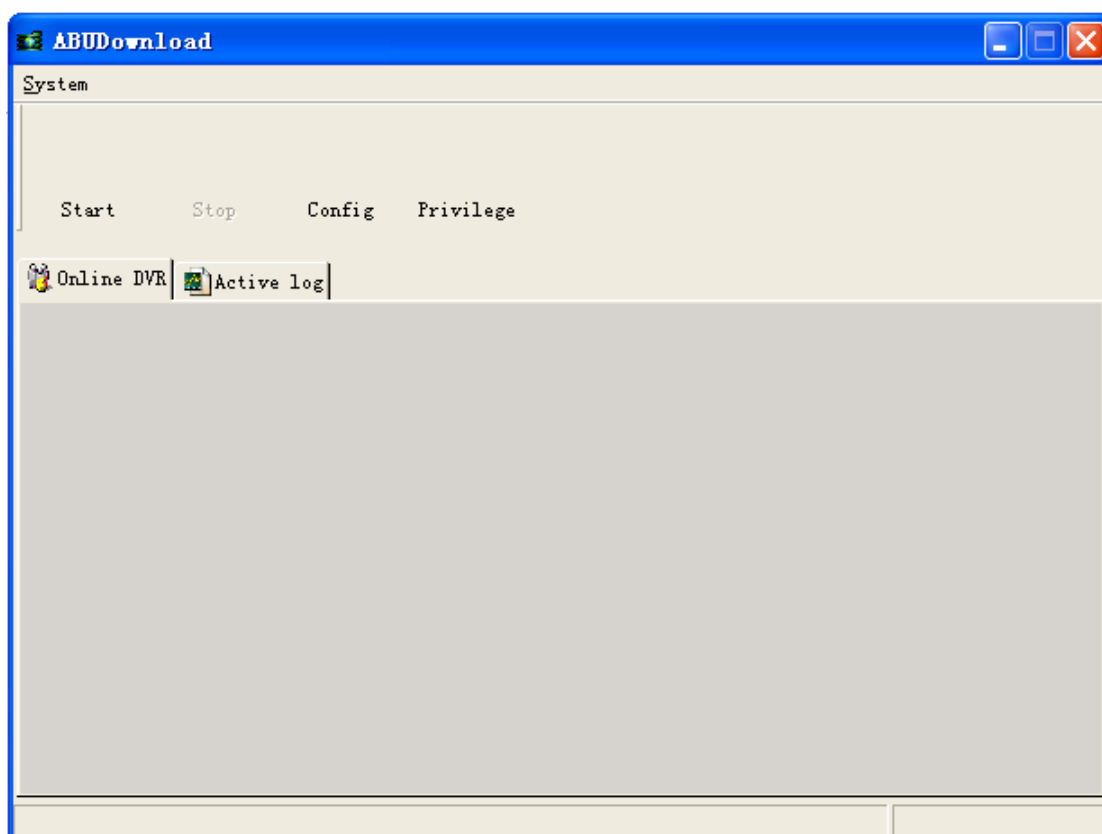


Fig. 1 Main interface

Start: Start the server

Stop: Stop the server

Config: Configure the downloading path and the recording's start/end time.

Privilege: To specific vehicle: the channel for downloading, start/end time.

Online DVR shows the DVR's that are logged onto the server.

Active log shows the operation logs in the server end.

Configuration (Config)



Fig 2 Configuration Page

Download to: Select the path where the recordings will be stored to, in this path, the software will Create a sub folder for each vehicle that is required to download the recordings. The folder name will be named after the vehicle's license plate number.

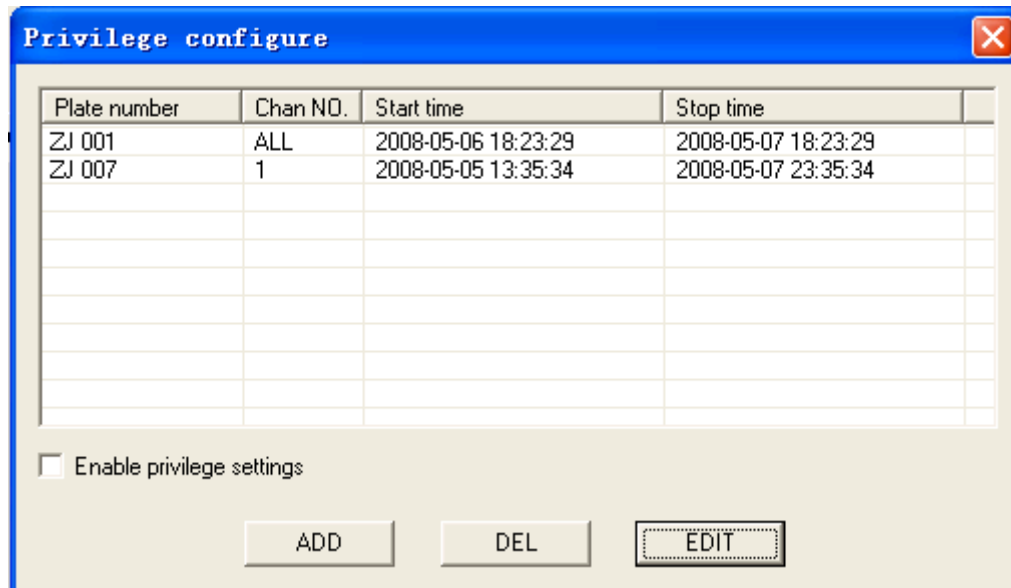
Start: The start time of the recording file.

Stop: The end time of the recording file.

These configurations are global settings.

When the "Enable privilege settings" in Fig.3 is not checked on, settings in here will start to work. ABUDownload will download all the recordings from all the devices that are logged on.(All channels!), the downloading period will be assigned to the settings in this page.

Privilege Configuration (Privilege)



The 'Privilege configure' dialog box features a table with four columns: 'Plate number', 'Chan NO.', 'Start time', and 'Stop time'. It contains two rows of data. Below the table is a checkbox labeled 'Enable privilege settings'. At the bottom are three buttons: 'ADD', 'DEL', and 'EDIT'.

Plate number	Chan NO.	Start time	Stop time
ZJ 001	ALL	2008-05-06 18:23:29	2008-05-07 18:23:29
ZJ 007	1	2008-05-05 13:35:34	2008-05-07 23:35:34

☐ Enable privilege settings

ADD DEL EDIT

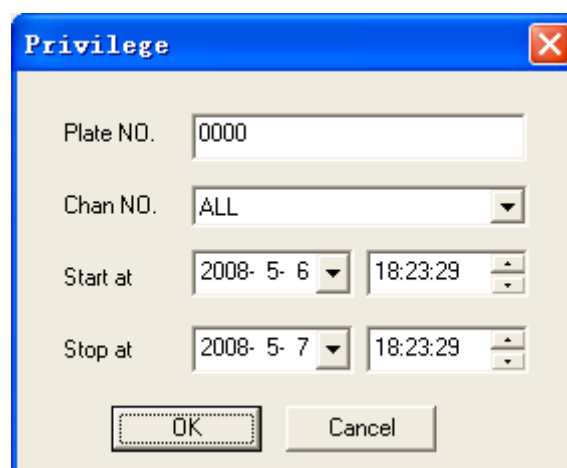
Fig. 2 Privilege Configuration

Add, Delete, Edit each vehicle's downloading settings.

When "Enable privilege settings" is checked, settings in this page starts to work, then this server will only download the recordings from the vehicles added in here; If "Enable privilege settings" is not checked, then the server will use the configuration in the Fig.2.

Privilege Configuration Edit Page

Click the Edit button in Fig.3, the edit dialogue box will pop out:



The 'Privilege' edit dialog box contains input fields for 'Plate NO.' (text), 'Chan NO.' (dropdown), 'Start at' (date and time), and 'Stop at' (date and time). It has 'OK' and 'Cancel' buttons at the bottom.

Plate NO. 0000

Chan NO. ALL

Start at 2008- 5- 6 18:23:29

Stop at 2008- 5- 7 18:23:29

OK Cancel

Fig 3Edit the specific vehicle's download settings

Users can configure the specific vehicle(by plate number)'s downloading channel(From 1 to all),and the corresponding time period.