

P ▲ R ▲ G ▲ D O X™
NV35M

Installation Manual V2.0

Outdoor/Indoor Window and Sliding Door Dual Detector with Anti-Masking and Pet Immunity

NV35M-EI07
 06/2019



General Description

Thank you for choosing the NV35M for your professional protection needs. The NV35M wired version will provide you the most advanced window and sliding door protection either in Pet Immune or Sharp mode. If you have any comments, please write to us at Paradox.com/products/feedback.

Pet Recommended Installation (please read)

The NV35M has been designed to be installed within the frame of windows and doors when installed outdoors. This will ensure the best performance against false alarms when random pets such as birds, cats and small dogs access the window sill. Other installation methods can be used with the NV35M such as wall beam protection but if installed outside of the frame its pet immunity may be compromised.

Installing the NV35M

1. Remove the NV35M front cover - open the Captive screw.

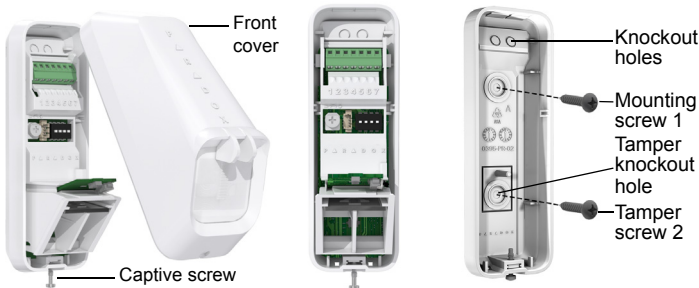


Figure 1 – Removing the Front Cover

Figure 2 – Main Unit

Figure 3 – Back Plate Unit

2. Remove the Main Unit: open the two snap-lock mechanisms on each side of the back cover attaching the Main Unit to the back cover as displayed below. Then remove the Main Unit.

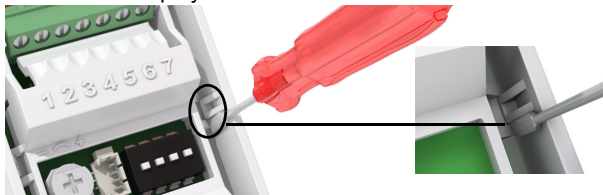
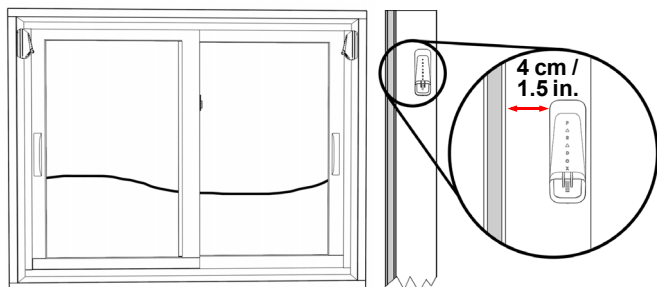


Figure 4 – Removing the Main Unit

3. Pull the wires from the control panel through the knockout holes and mount the back cover onto the window frame or wall using screws.
Note: PLEASE KEEP AT LEAST 4 cm / 1.5 in. clearance from window/shutter.



An optional mounting bracket for the NV35M is available for ordering, part number: SB35.

4. Attach the Main Unit to the back cover - ensure the locks snap closed.

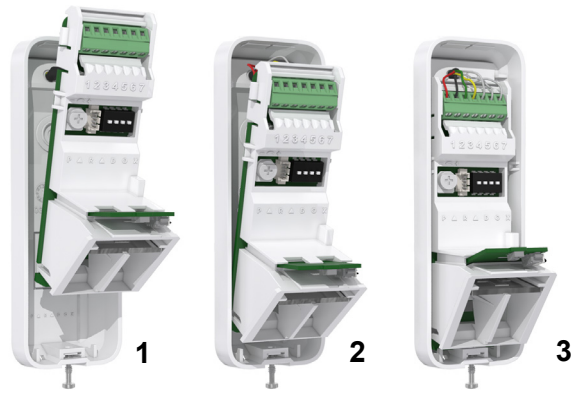


Figure 5 – Attaching the Main Unit

5. Connect the wires to the terminal blocks according to the following wiring assignment.

Table 1: Wiring Assignment

Terminal Connector	Recommended Wiring Assignment
1	12V+
2	Minus (-)
3	Fault indication
4	Tamper* indication
5	Common (Fault & Tamper)
6	Alarm indication
7	Common (Alarm)

* Tamper must be enabled on SP panels.

6. Set the following Detector settings according to requirements.

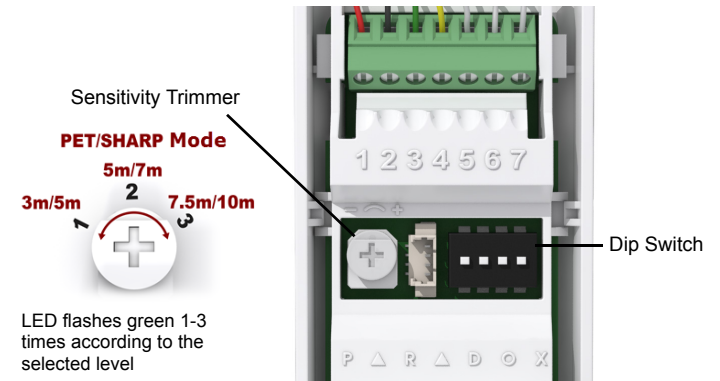


Figure 6 – Detector Settings

The following table displays the Dip Switch settings.

Table 2: Dip Switch Settings

Dip Switch Number	Function	Mode Description
1	LED	ON: LED on (default) OFF: LED off
2	PET Immunity/ SHARP Mode	ON: PET Immunity mode (default) OFF: SHARP mode
3	Anti-mask	ON: On (default) OFF: Off
4	Anti-mask Sensitivity	ON: High (default) OFF: Low

Note: PLEASE KEEP AT LEAST 4 cm / 1.5 in. clearance from window/shutter.

7. Replace the front cover and close the Captive screw.
Do not obscure the detector's field of view.

Testing the NV35M

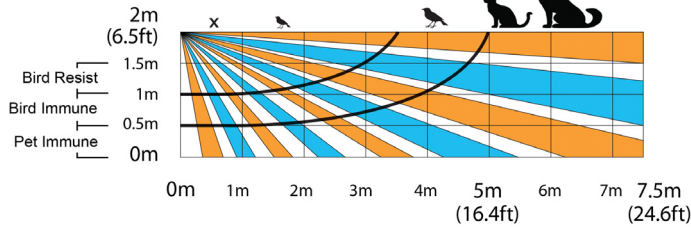
Perform a **Walk-Test** to test successful installation: Walk slowly across the far end of the detection range. Ensure detection.

Walk test mode lasts 5 minutes after the tamper screw is closed.

Beam Pattern

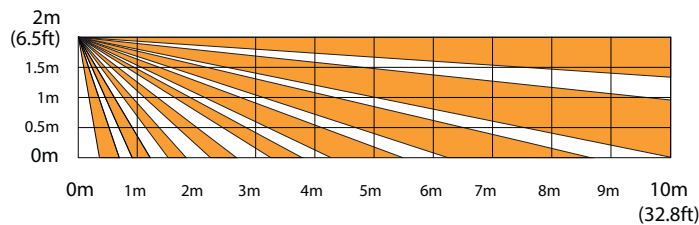
PET Mode

SIDE VIEW:



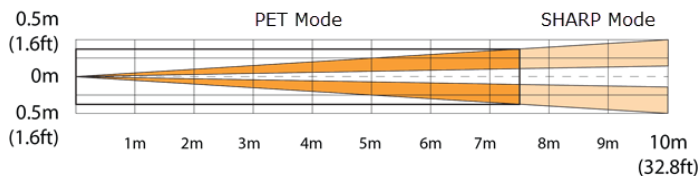
SHARP Mode

SIDE VIEW:



Top View

TOP VIEW:



PET Immunity Mode Installation



LED Display

Feature	LED Status Indicator
Tamper open	Green: ON for 0.3 seconds every 30 seconds
PIR sensitivity level setting	Green: Flashes 1-3 times according to the selected level
Alarm detection	Red: ON for 2 seconds
Booting/Tamper close	Green/Red alternating flashes for 30 seconds
Anti-mask detection	Orange: Flashes ON/OFF 3 times every 60 seconds

Technical Specifications

Specification	Description
Infrared sensor type	2 Dual elements
Detection range	<ul style="list-style-type: none"> PET Immunity mode: 7.5m x 2m (25 x 7 ft) Sharp mode: 10 x 2m (33 x 7 ft)
Super Pet Immunity	Pet size approximately 50cm
Anti- mask	Active IR detection for blocking items 30cm and sprayed liquid
Input voltage	10 to 15VDC
Current consumption	Typical: 15mA Maximum: 19.2mA
Compatibility	EVO, Spectra and Magellan systems
Outdoor protection	IP54
Operation temperature	-35°C to +50°C
Relative humidity	95% non-condensing
Dimensions	12.3 x 6.1 x 4.3 cm (4.8 x 2.4 x 1.7 in.)
Certifications	CE, EN50131-2-2 Grade 3, Class IV
Weight	100g / 0.2 lb



Warranty

For complete warranty information on this product, please refer to the Limited Warranty Statement found on the website: www.paradox.com/ terms or contact your local distributor. Specifications may change without prior notice.

Patents

US, Canadian and international patents may apply. Paradox is a trademark or registered trademark of Paradox Security Systems (Bahamas) Ltd.

