

## 1 BABYWARE SYSTEM REQUIREMENTS

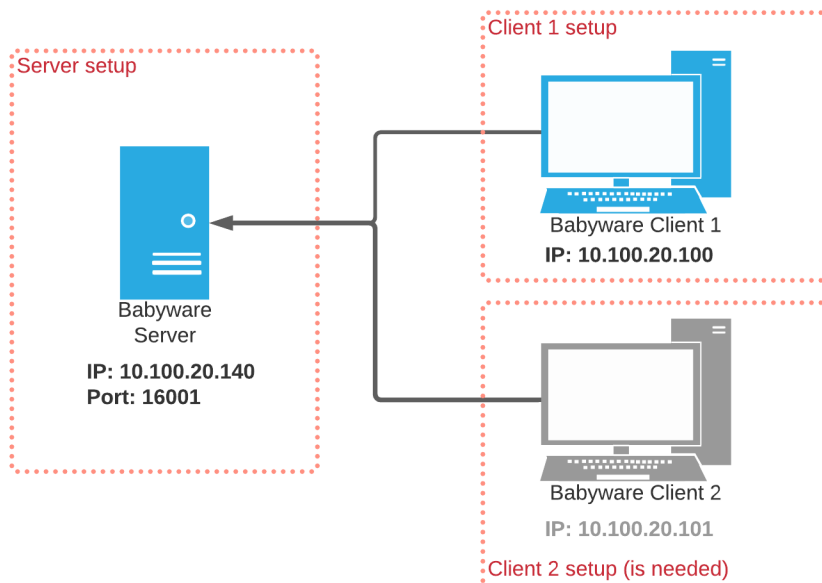
---

- **A Processor:** Intel or AMD processor with at least 64-bit support and 2 GHz or a faster processor
- **An Operating system:** Microsoft® Windows Vista, Windows 7, or Windows 10 (32-bit or 64-bit)
- **RAM:** 4 GB RAM or more
- **Hard disk space:** At least 2.0 GB or more hard-disk space depending on the numbers of accounts
- **Monitor resolution:** 1024x768 is recommended
- **Internet:** An Internet connection is necessary for communication with panels thru SWAN.
- PDF viewer of your choice such as [Adobe Acrobat Reader](#), [Microsoft Edge](#) and [Google Chrome](#) contain built-in PDF viewer functionality. This is needed to be installed to view the documentation and the help files.
- Administrative rights on the PC where you will be installing the software

## 2 INTRODUCTION

---

In this configuration, the accounts (Server) and the Babyware GUI interface (Client) are not installed on the same computers. Using this type of configuration, it is possible to install more than one Client. Each of them will have access to the same accounts on the server. The setup is done in several separate steps first, the Server setup then, the Client(s) setup. For the clarity of the procedure, we will assume that the installation for the server and client(s) are the same network LAN.



### 3 BABYWARE IN SERVER MODE SETUP PROCEDURE

---

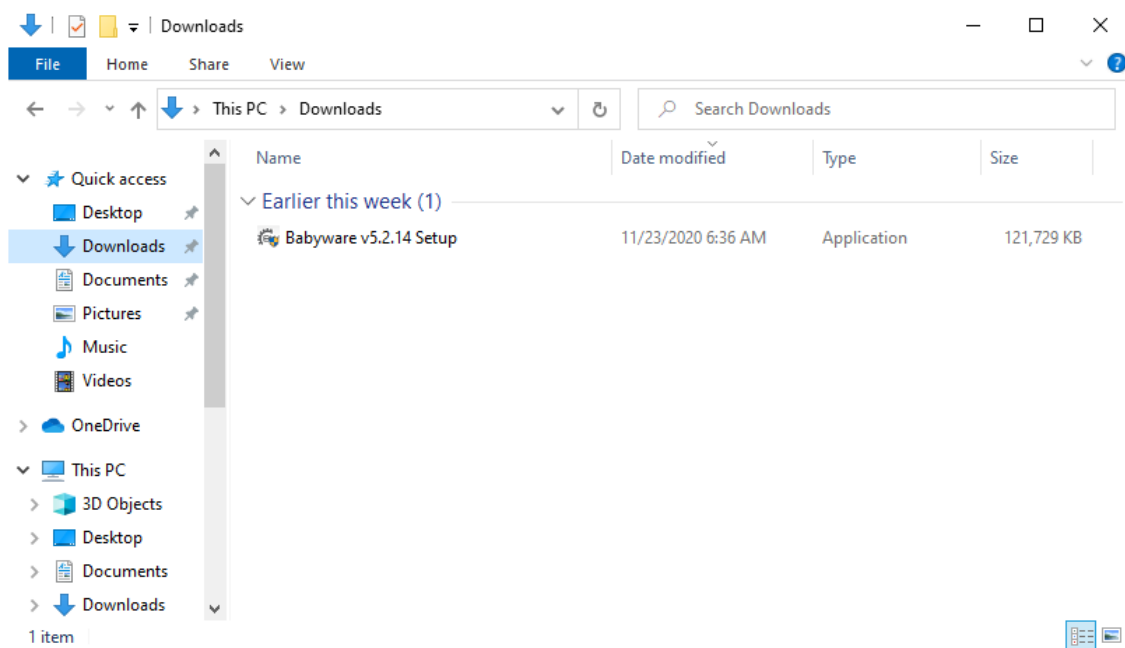
Below are the primary steps required to get Babyware up and running in Babyware server mode.

#### 3.1 PREPARE BABYWARE FOR INSTALLATION

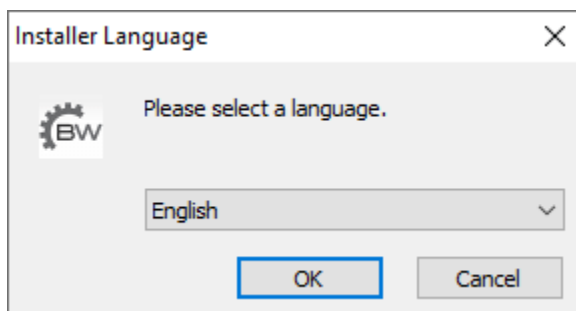
1. Verify that your computer you will install Babyware meets the system requirements (section 1 above).
2. Log in as a user with administrative privileges.
3. Close all applications on your computer.

#### 3.2 INSTALL BABYWARE AS SERVER

1. Double-click on the desired Babyware Setup.exe file to start the installation process.



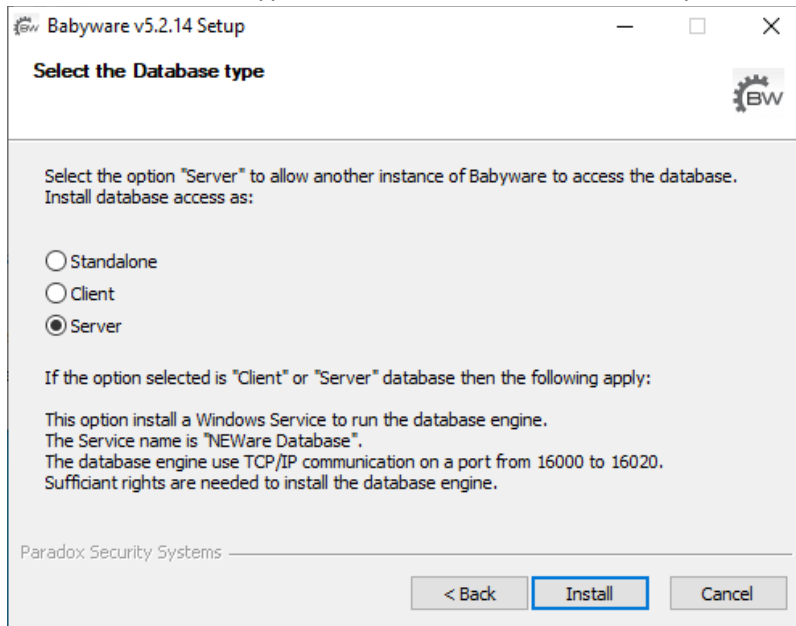
2. Select the installation language



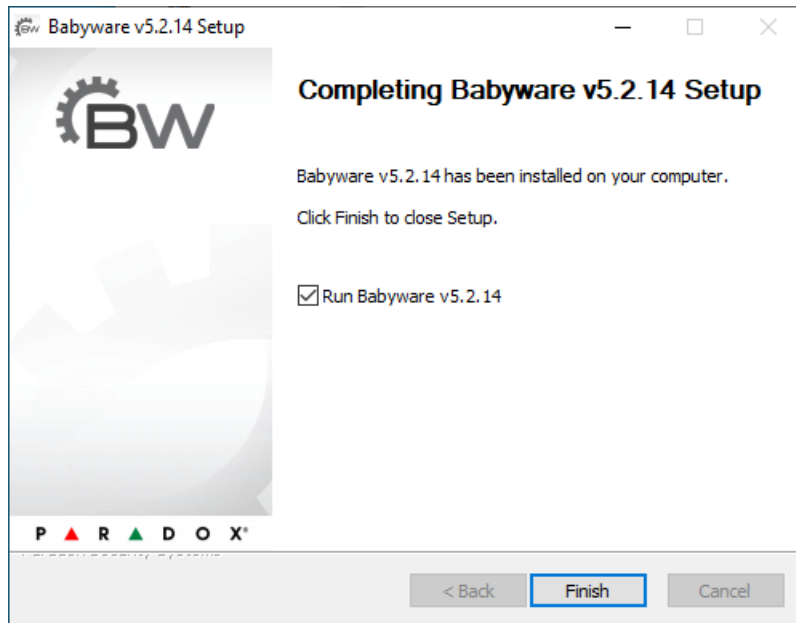
## Client/Server setup procedure

---

3. During the installation, read the master agreement and accept it, or exit if you do not agree with the terms.
4. Select the installation location path.
5. Select the Start Menu shortcut name.
6. Select the database type. In this case, select the **Server** option then click **Install**.

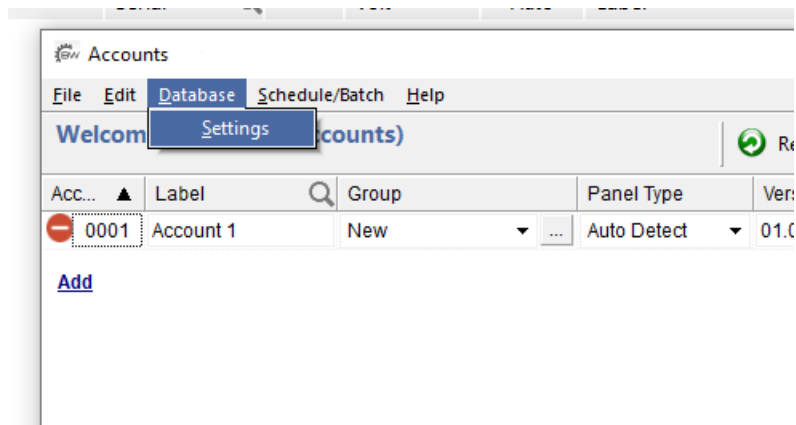


7. The setup program will install all the needed files for the server mode installation.
8. If the installation is on a computer running Windows Vista or Windows 7, a dialog may appear saying that the *Microsoft Visual C++ 2013 Redistributable package* will install on the computer. This package will install the base files needed to run Babyware correctly on the computer. Click **Ok** to continue.
9. On the last step make sure the **Run Babyware** checkbox is checked then click **Finish**.



### 3.3 BABYWARE SERVER CONFIGURATION

1. At the **Login** dialog, enter the default password (1234).
2. At the **Accounts** dialog select **Database** → **Settings**

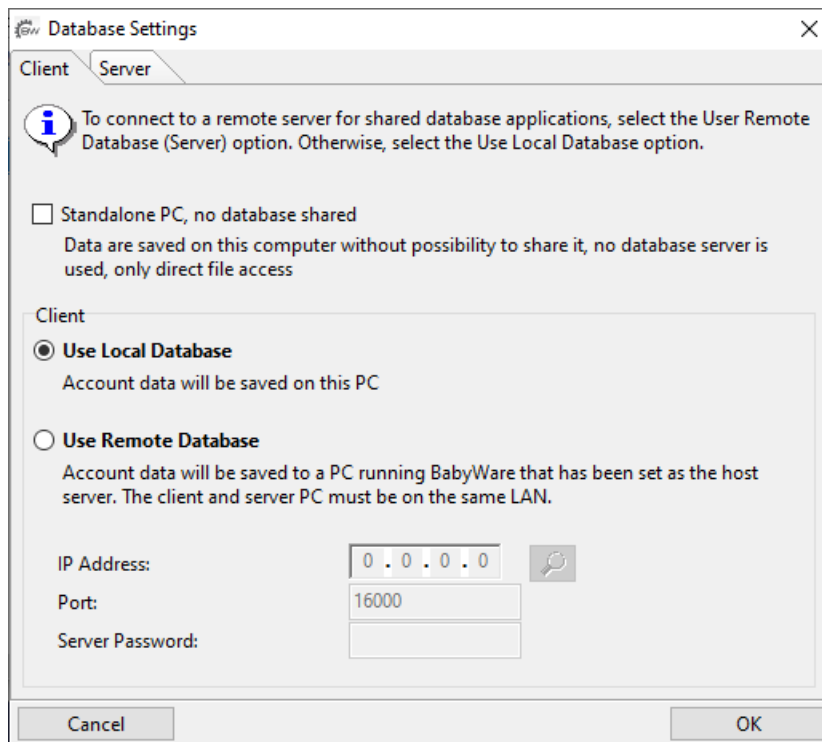


3. The **Database Setting** dialog will be displayed. The **Standalone PC** checkbox should not be selected but the **Client / Use Local Database** option should be selected.

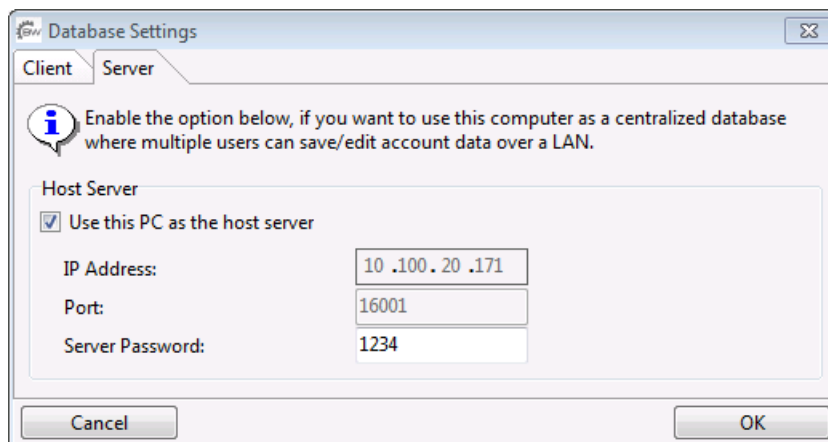
# BABYWARE

## Client/Server setup procedure

P ▲ R ▲ D O X™



4. Now, click on the **Server** tab. This will display the server database parameters.



Make sure the **Use this PC as the host server** checkbox is checked. Then enter the desired password that will be needed to access the server. Take note of this password as it will be needed during Babyware Client configuration step. (see section 4.3 below)

Also, take note of the server IP Address and port as those will also be needed during the Babyware Client configuration step.

For this example, we have:

<b>IP Address:</b>	<b>10.100.20.171</b>
<b>Port:</b>	<b>16001</b>
<b>Server Password:</b>	<b>1234</b>

- Now close the dialogs and Babyware as the Babyware Server configuration is completed.

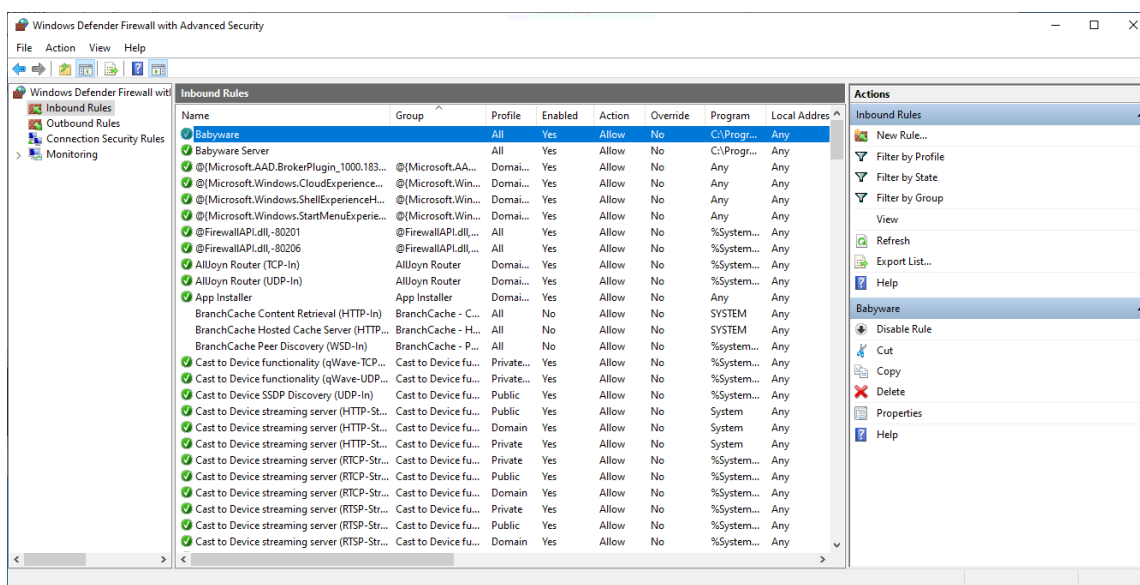
### 3.4 BABYWARE WINDOWS FIREWALL RULES VALIDATION (OPTIONAL)

During the installation process, the setup added new needed firewall rules within the Windows firewall to permit for the Babyware server to be accessible on the network. Firewall rules define what kind of Internet traffic is allowed or blocked. A rule can be applied to traffic from the Internet to your computer (inbound), or from your computer to the Internet (outbound). In our case, the setup had added two inbound rules.

- Rule 1 - **Babyware server**: This rule is permitting to the Babyware Server to be accessible (visible) to the other Babyware clients within the network.
- Rule 2 - **Babyware**: This rule is permitting to Babyware to access the Internet.

If you want, you can verify that those rules are correctly defined. Here is the procedure to access Windows Defender Firewall with Advanced Security

- You can open the “Windows Defender Firewall with Advanced Security” dialog by typing in the **Start Menu**:
  - For Windows 10 type: **Windows Defender Firewall with Advanced Security** then click **Enter**.
  - For Windows 7 type: **Windows Firewall with Advanced Security** then click **Enter**.
- Click Inbound Rules in the left frame of the window. Now you should see the following dialog containing the **Babyware** and **Babyware Server** rules.



- You can double-click on any of those rules to see all its properties.

## Client/Server setup procedure

---

4. If one or both of those rules are not present, this can be due to access privileges that as not been granted to access the firewall rules for the user during the installation process. In this case, your network administrator could easily create those rules by invoking the following two commands:

```
NETSH ADVFIREWALL FIREWALL ADD RULE NAME="BABYWARE" DIR=IN PROGRAM="PATH OF  
INSTALLATION OF BABYWARE\BABYWARE.EXE" PROFILE=ANY ACTION=ALLOW'
```

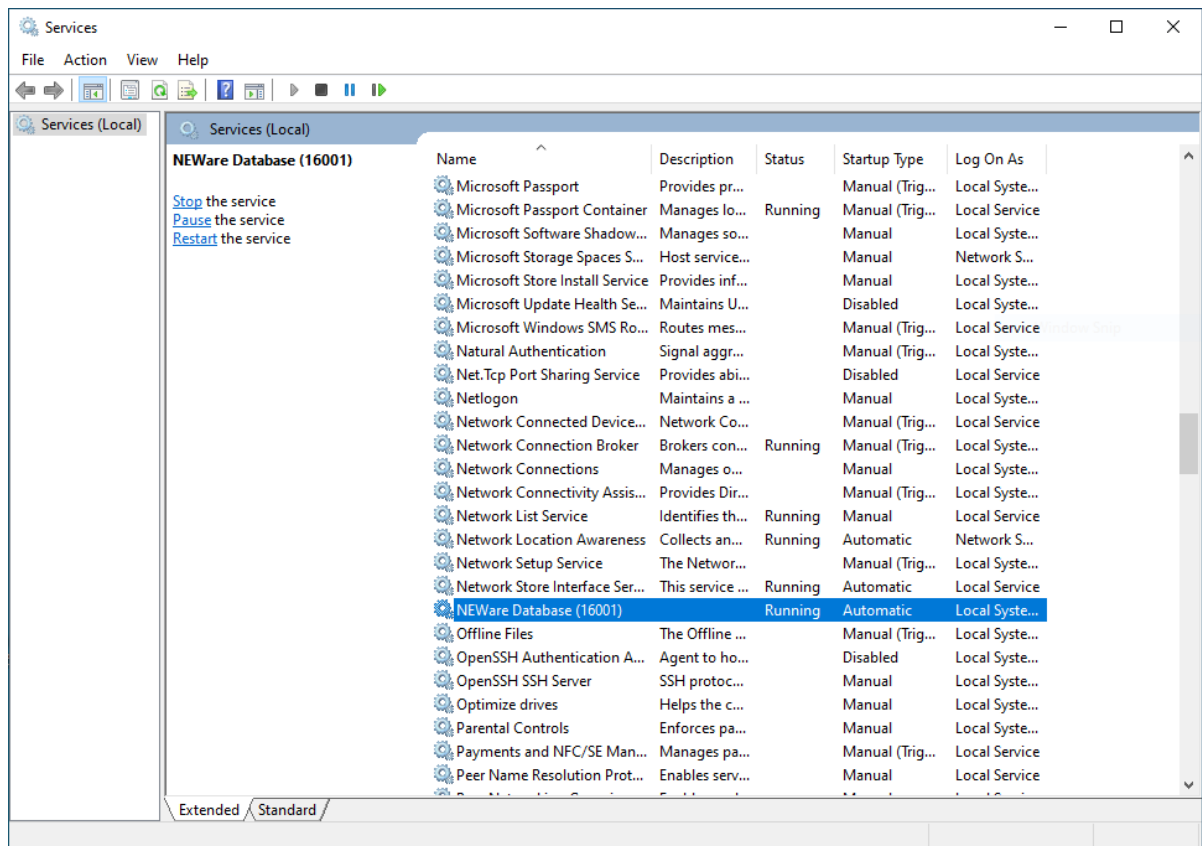
```
NETSH ADVFIREWALL FIREWALL ADD RULE NAME="BABYWARE SERVER" DIR=IN PROGRAM="PATH  
OF INSTALLATION OF BABYWARE\NXSERVER.EXE" PROFILE=ANY ACTION=ALLOW'
```

### 3.5 BABYWARE DATABASE SERVICE VALIDATION (OPTIONAL)

During the installation process, the setup added a new Windows service that runs the Babyware database. Unlike regular software that is launched by the end-user and only runs when the user is logged on, Windows Services start without user intervention and may continue to run long after the user has logged off. The Windows services run in the background and will usually kick in when the machine is booted.

If you want to see if the Babyware server service is running, you can do the following.

1. You can open the **Windows Services** dialog by typing in the **Start Menu** type Services then with the mouse click on the Services shortcut.
  - Type: **Services** then click **Enter**.



2. Scroll in the list of services to find in the name a service name that begins with **NEWare Database** and with a value in parenthesis. In this example, we have **NEWare Database (16001)** as the service name. The value **16001** indicates the port number used by the Babyware database.
  - In the **Status** column, you should have the service status at **Running** state
  - In the **Startup Type** column, you should have the status at **Automatic**, so the service is started when the computer boot-up.
  - You can also double-click on the service to look at its properties.

## 4 BABYWARE IN CLIENT MODE SETUP PROCEDURE

Below are the primary steps required to get Babyware up and running in Babyware client mode. Use this procedure to configure all needed Babyware clients.

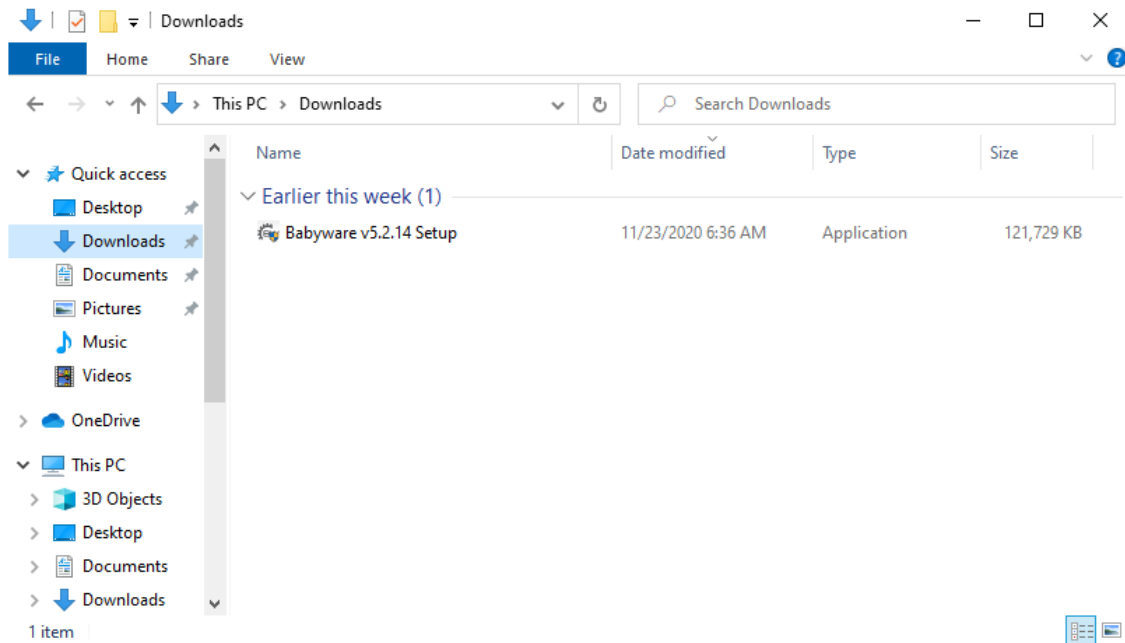
### 4.1 PREPARE BABYWARE FOR INSTALLATION

1. Verify that your computer you will install Babyware meets the system requirements.
2. Log in as a user with administrative privileges.
3. Close all applications on your computer.

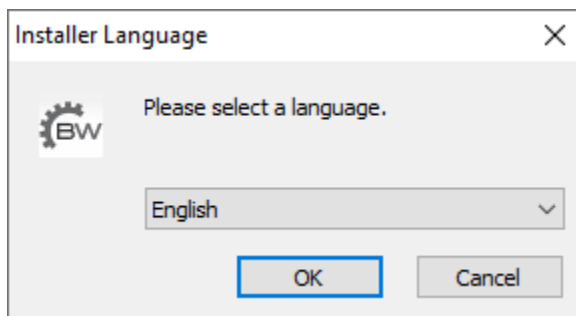


### 4.2 INSTALL BABYWARE AS CLIENT

1. Double-click on the desired Babyware Setup.exe file to start the installation process.



2. Select the installation language



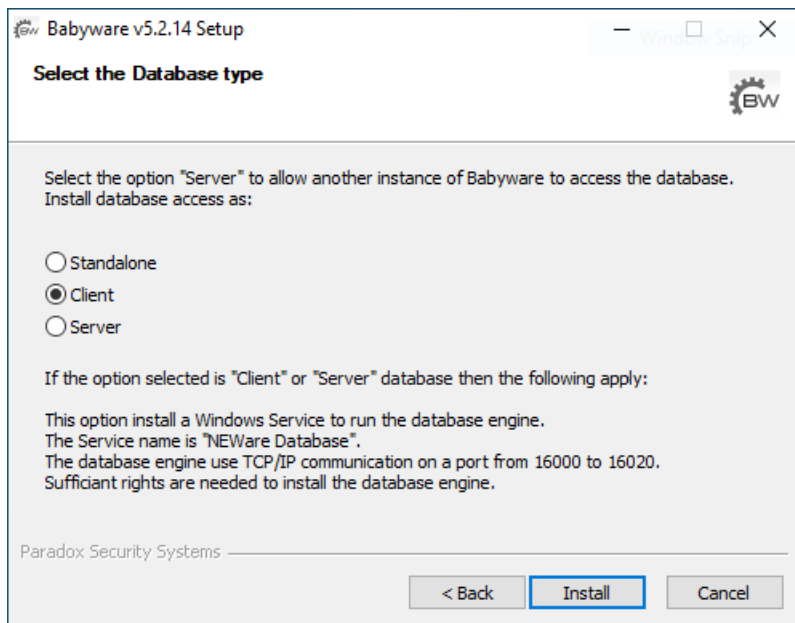
3. During the installation, read the master agreement and accept it, or exit if you do not agree with the terms.
4. Select the installation location path.
5. Select the Start Menu shortcut name.

# BABYWARE

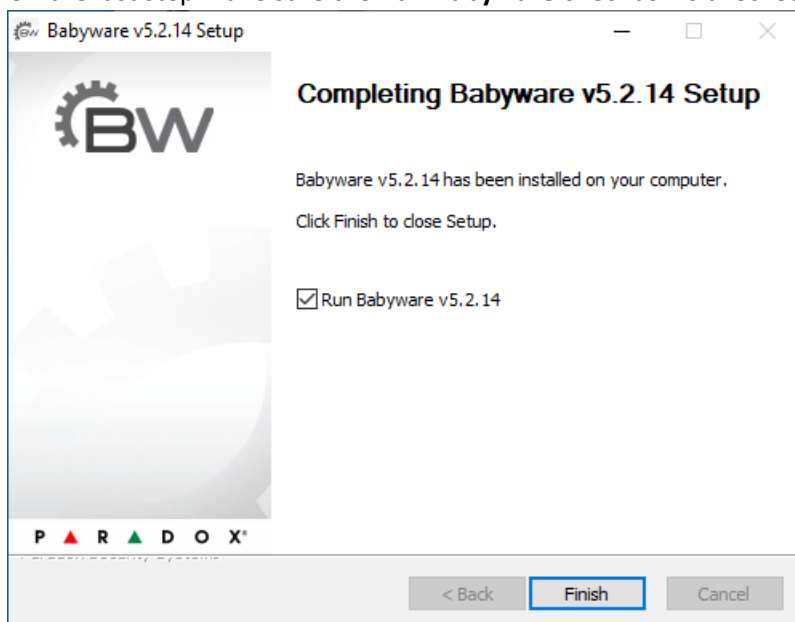
## Client/Server setup procedure

P ▲ R ▲ D O X™

6. Select the database type. In this case, select the **Client** option then click **Install**.

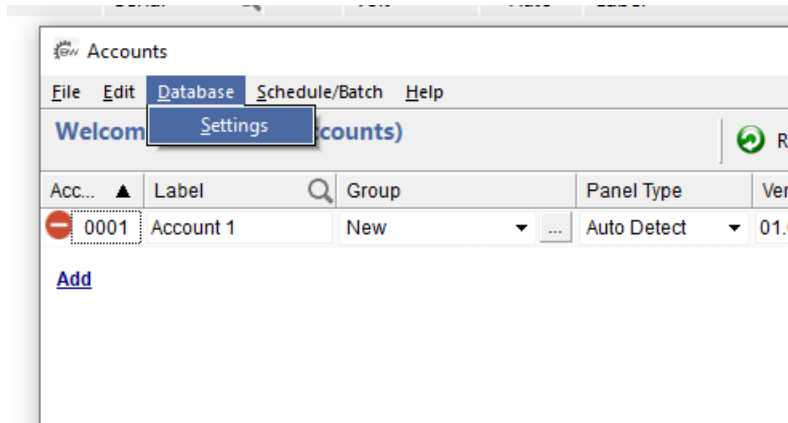


7. The setup program will install all the needed files for the client mode installation.
8. If the installation is on a computer running Windows Vista or Windows 7, a dialog may appear saying that the *Microsoft Visual C++ 2013 Redistributable package* will install on the computer. This package will install the base files needed to run Babyware correctly on the computer. Click **Ok** to continue.
9. On the last step make sure the **Run Babyware** checkbox is checked then click **Finish**.

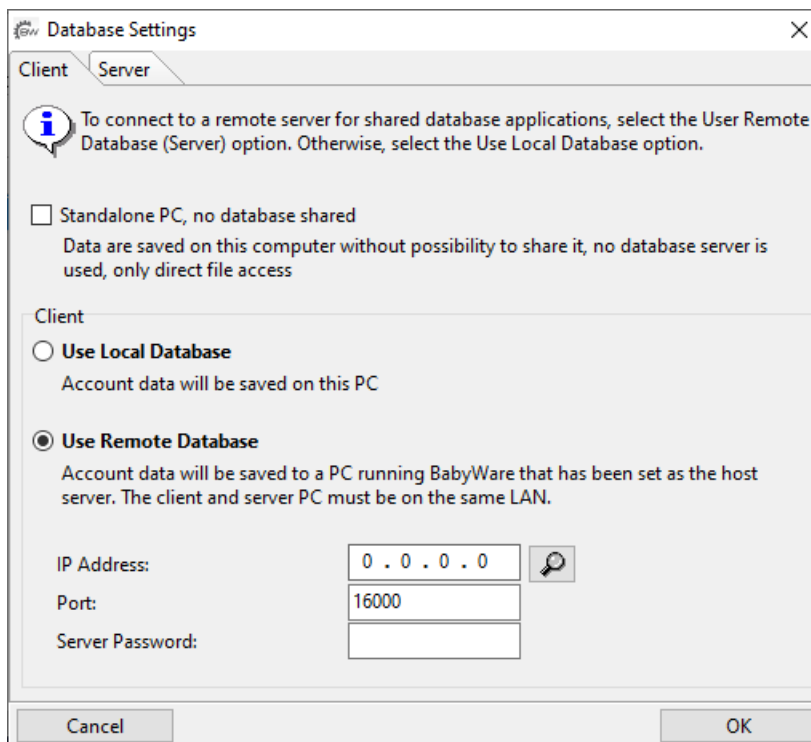


### 4.3 BABYWARE CLIENT CONFIGURATION

1. At the **Login** dialog, enter the default password (1234).
2. At the Accounts dialog select **Database** → **Settings**



3. The **Database Setting** dialog will be displayed. The **Standalone PC** checkbox should not be selected but the **Client / Use Remote Database** option should be selected.

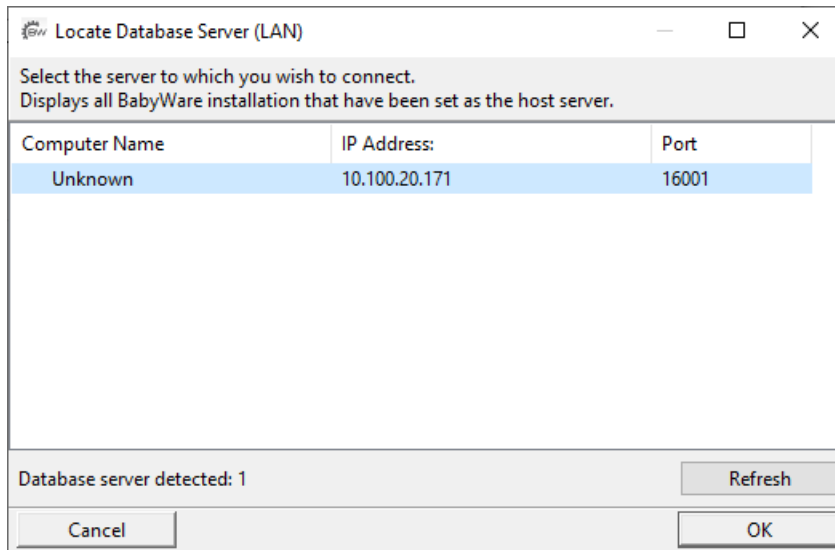


4. In the **Client / Use Remote Database** section, the **IP Address**, **Port** and the **Server Password** of the Babyware Server create in section 3.3 above. To ease the client configuration Babyware provide a tool that searches all Babyware servers in the LAN. To start it, click on the **Magnifying Glass** button. The Locate Database Server dialog will appear.

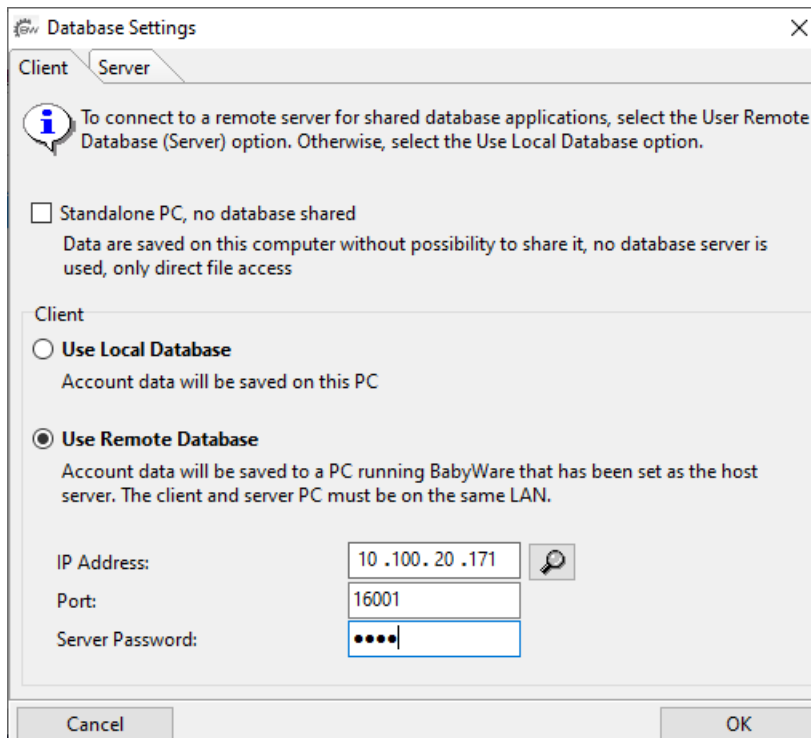
# BABYWARE

## Client/Server setup procedure

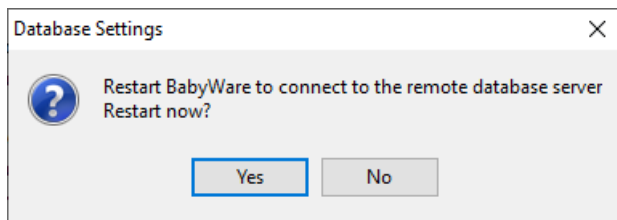
P ▲ R ▲ D O X™



This dialog will list all the Babyware Servers located in the LAN. You can select the one that corresponds to your server and click the **OK** button. The dialog will close and the **IP Address** and **Port number** of the Babyware Server will be filled with the correct values. To complete, you must enter the correct **Server Password** created in section 3.3 above.

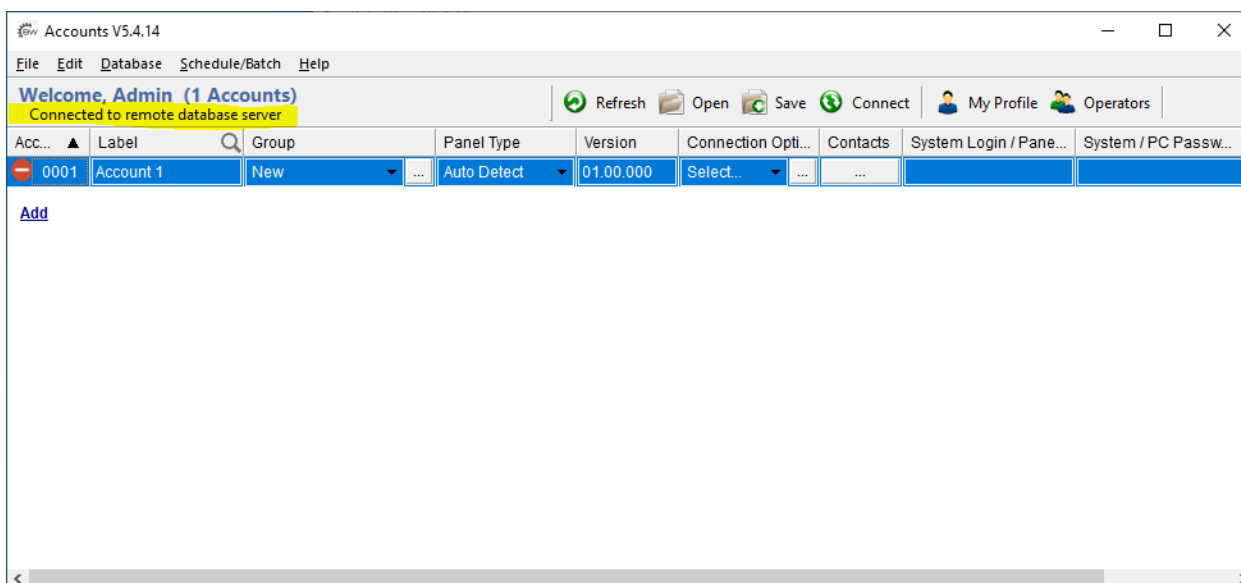


5. Babyware now will ask to restart to complete the client configuration. Press **Yes** to restart Babyware. Babyware need to restart to complete the configuration.



#### 4.4 BABYWARE CLIENT VALIDATION

1. After Babyware has been restarted, you can verify that the Babyware Client configuration is valid.
2. At the **Login** dialog, enter the default password (1234).
3. In the **Accounts** dialog you should see the message “Connected to remote database server” this indicates that Babyware is working in Client mode.



#### 4.5 BABYWARE WINDOWS FIREWALL RULES VALIDATION (OPTIONAL)

During the installation process, the setup added new needed firewall rules within the Windows firewall to permit to Babyware access the internet. Firewall rules define what kind of Internet traffic is allowed or blocked. A rule can be applied to traffic from the Internet to your computer (inbound), or from your computer to the Internet (outbound). In our case, the setup had added one inbound rule.

- **Babyware:** This rule is permitting to Babyware to access the Internet.

If you want, you can verify that those rules are correctly defined. You can follow the same procedure as in section 3.4 above.